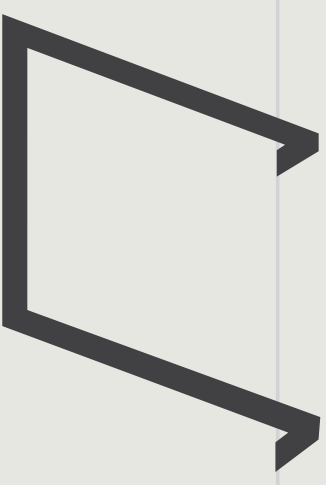
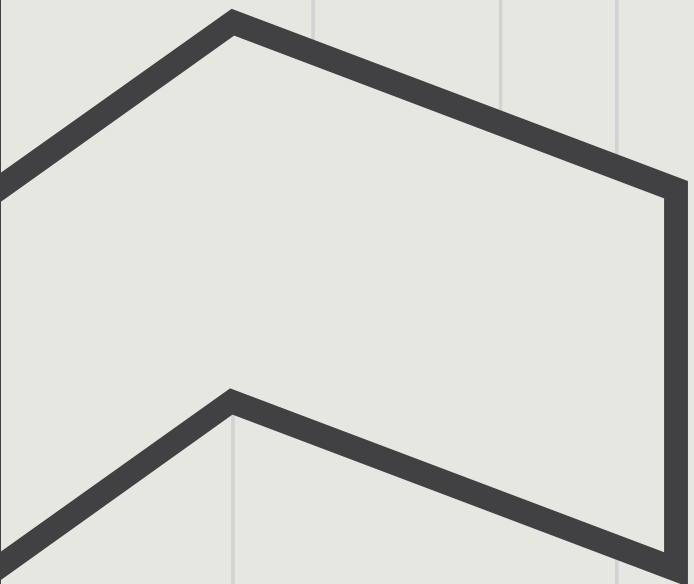
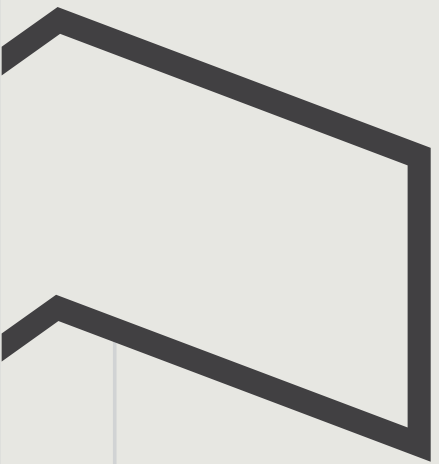


S L A T E

By **Beedie**/Living



Rethink Brentwood



BUILT FOR GOOD

65-YEAR

LEGACY

BUILDING

THRIVING

COMMUNITIES

1946

Founder Keith Beedie builds his first workshop in Marpole, Vancouver.

1954

Beedie was founded by Keith Beedie.

1956

Beedie's first Burnaby head office opens on Kingsway.

1960

Innovative tilt-up industrial construction method propels Beedie forward to become Western Canada's premier industrial developer.

1974

Beedie purchases iconic 1000 Parker Street, retaining it to be home to hundreds of artists in what is known today as the Parker Art Salon.

1993

The Keith and Betty Beedie Foundation is formed, donating millions to local charities over the years.

2001

Ryan Beedie becomes the President of Beedie.

2004

Beedie acquires 84 acres of land in Coquitlam, which will soon be developed into Fraser Mills — Coquitlam's first and only waterfront community.

2011

The SFU Beedie School of Business is established with a \$22 million endowment from Keith and Ryan Beedie.

2011

Beedie expands to apply its expertise and reputation for quality into homes, forming the residential arm of Beedie Living.

2012

Station Square by Beedie Living and Anthem Properties launches in Metrotown and becomes one of Western Canada's most successful masterplan communities.

2018

Beedie Living is the proud recipient of the UDI Award for Excellence in Urban Development for Best Suburban High-Rise for Crown in Coquitlam.

2018

Beedie Luminaries scholarship program is established with a \$50 million commitment, empowering students from across British Columbia.

2021

Beedie Living is one of BC's fastest-growing residential builders, with over 7,000 homes under development.

Beedie is proud to participate in the continued transformation of Burnaby — the city our family-run company has called home since 1954. During that time, Beedie has grown to become one of Western Canada's largest developers, completing over 30 million square feet of industrial and residential spaces.

With Beedie's in-house construction and homeowner care divisions, your new home is built and maintained to the highest standard of quality. Whether it is a residential high-rise or a mixed-use community, we have an unmatched track record of creating spaces where people can thrive.



A selection of Slate's elevations transition into a new architectural expression, creating dramatic balconies accented with lush landscaping. It's an iconic addition to the skyline — ushering in a new era for Brentwood.

Slate's collection of homes is designed to inspire. Walking distance from the SkyTrain and within the flourishing Brentwood neighbourhood, Slate offers high-style residences and significant on-site amenities catering to those with discerning tastes.

Rethink Convenience



A selection of Slate's elevations transition into a new architectural expression, creating dramatic balconies accented with lush landscaping. It's an iconic addition to the skyline — ushering in a new era for Brentwood.



Brentwood Town Centre

Walk 10 minutes



Soon Coffee

Shops at Brentwood Town Centre



A brand-new, world-class urban centre is only steps away from home. Brentwood is a hub for shopping, dining and entertainment — experience everyday convenience and an enriched lifestyle among the varied offerings. Live close to all this, without getting caught up in the bustle.

La Taqueria





Positioned within easy access to the SkyTrain and Brentwood Town Centre, Slate defines convenience. Commuting to work, enjoying Sunday brunch and shopping at nearby boutiques — it's all minutes from home.

Beedie School of Business at SFU
Drive 7 minutes



Holdom SkyTrain Station
Walk 4 minutes



Deer Lake Park
Drive 7 minutes



Cactus Club Cafe Burnaby
Drive 4 minutes

Whole Foods Market North Burnaby
Drive 4 minutes



JOEY Burnaby
Drive 5 minutes



Christine Sinclair Community Centre & Burnaby Lake Sports Complex
Drive 5 minutes

BCIT
Drive 7 minutes



Metropolis at Metrotown
Drive 10 minutes

SFU
Drive 12 minutes

The City of Lougheed Shopping Centre
SkyTrain 18 minutes

North Vancouver
Drive 30 minutes

Downtown Vancouver
SkyTrain 30 minutes



The outdoor experience includes expansive room for dining and lounging — with incredible views perfectly framed for enjoyment.

Slate is a mastery of simplicity and intention. With thoughtfully planned interiors, open floorplans showcase a choice of palette as an ideal canvas to express one's personal style. This warm esthetic continues to resident amenities, where friends and neighbours can socialize in extraordinary style.

Rethink Design





The outdoor experience includes expansive room for dining and lounging — with incredible views perfectly framed for enjoyment.

A REFINED LIVING EXPERIENCE

Not only has Slate reimagined how a home can look from the outside, its interior details transform how it feels on the inside. Award-winning BYU Design has made refined selections to create versatile, beautiful spaces that will smoothly carry you through daily living and special occasions.

Large floor-to-ceiling windows welcome brilliant natural light into your air-conditioned home. Featured below is the light colour scheme, a serene backdrop for living.

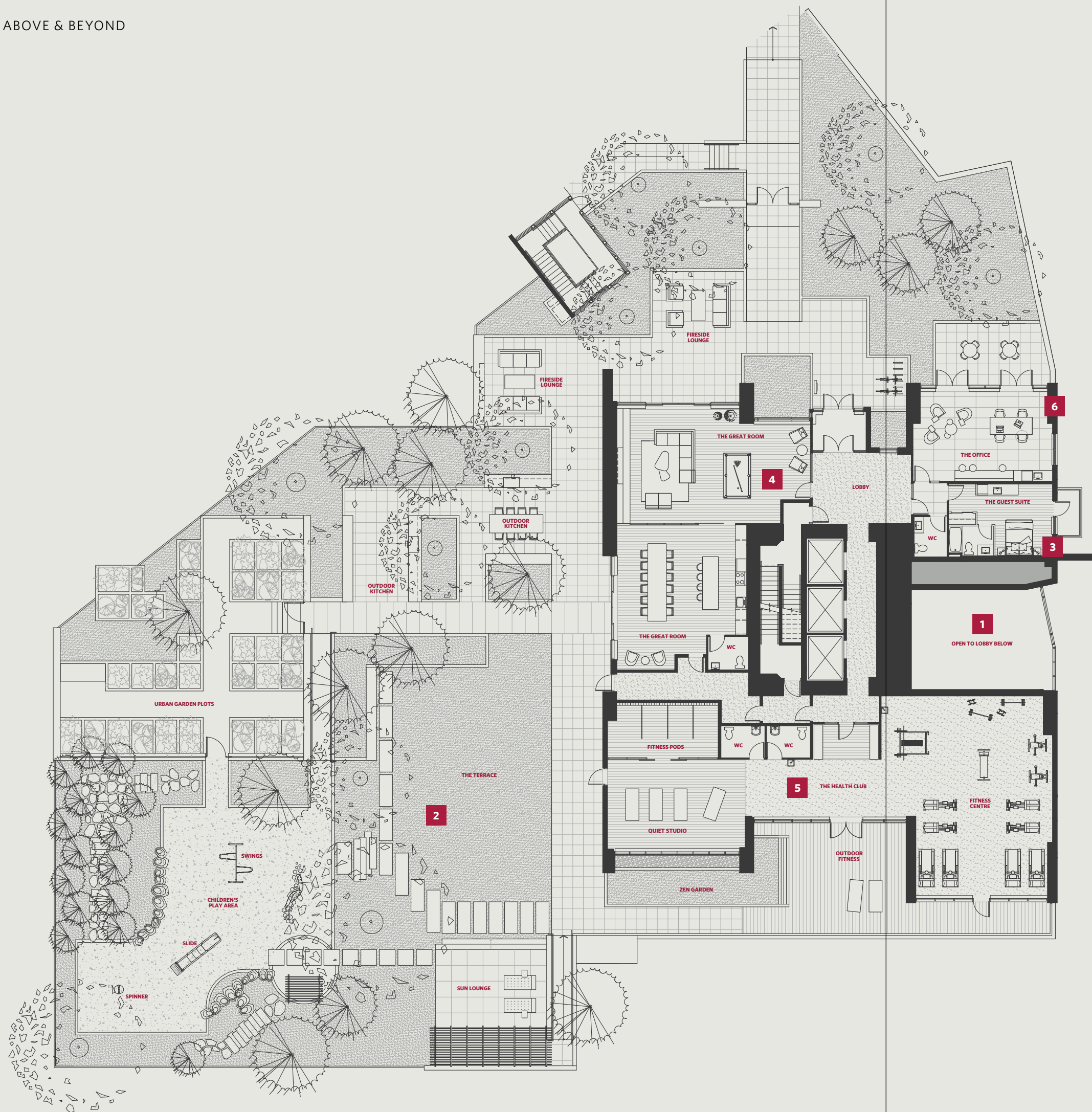


Featuring high-end integrated appliances and an abundance of storage, functionality and design reign in kitchens — with the dark scheme, as shown above, enriching the sophistication.

THE GREAT OUTDOORS

Residents can gaze out from expansive patios designed as true extensions of their interior space. Sights include city views and Beecher Creek to the southwest, and the majestic snow-capped North Shore Mountains and Burrard Inlet to the north.





Slate's amenities offer a series of welcome reprieves that go beyond merely relaxing and entertaining. Walk along each of the stunningly landscaped pathways to a variety of outdoor retreats, some with wide lawns or playgrounds, others with garden-side dining or cozy fireplace lounges. Inside, spaces enhance your lifestyle. Get active in the state-of-the-art fitness club, connect in the co-working hub or celebrate in the large social lounge.

Rethink Vitality

1 The Grand Entry
Slate's lobby creates the perfect first impression. Its soaring triple-height ceiling, stone fireplace and brilliant chandelier are undeniably elegant, while the water feature at the entrance provides a relaxing transition as you arrive home.

2 The Terrace
Gather at one of the different outdoor fire tables or walk from garden to garden — green gems that span the property and beyond. At Slate, one-third of the site remains as protected green space for residents to enjoy.

3 The Guest Suite
The guest suite, which is inspired by the world's leading boutique hotels, comes complete with a bathroom and kitchenette for visiting friends and family.

4 The Great Room
Emerge from the outdoors into the community's Great Room and formal dining space. This grand socializing area features loft ceilings and a gourmet chef's kitchen. The space can also be partitioned for multiple use.

5 The Health Club
The fitness area offers space to work out, practise yoga, and stretch. Residents will benefit from a private fitness room, where one can take part in workouts via apps such as Peloton. All of this in a space that looks out over a lushly landscaped garden. On a sunny day, bring your workout outside to the connected outdoor fitness space.

6 The Office
Residents can take advantage of a dedicated co-working space and business centre connected to an outdoor patio.



The Terrace is a beautifully landscaped oasis in the middle of a city. With individual lounge areas, an outdoor kitchen, harvest tables, cozy fireplaces, garden plots, a sprawling lawn and a children's playscape, you will want to spend every moment outdoors.

DYS Architecture

Driven by a strong sense of social and environmental responsibility, DYS has been creating architecture that has a positive impact on the lives of its users, the surrounding neighbourhood and the community at large since 1982. Their process centres on inclusion, creativity and passion, with an emphasis on collaboration, both inside and outside the firm.

They bring a thirst for innovative and creative responses to complex issues to arrive at simple and elegant solutions to the most challenging design issues.

Rafii Architects

Since 1983, Rafii Architects has provided client-focused consultation with a collaborative approach to each project. Their reputation is characterized by their proven ability to work with public officials and challenging client programs while maintaining a timeless and refined design philosophy.

Their extensive portfolio includes many well-received projects throughout the Greater Vancouver area, Vancouver Island, Alberta, and the US, with particular recognition for their work in high-rise residential and mixed-use projects.

BYU Design

Since opening their doors, BYU Design has earned a reputation as one of the most trusted, accomplished and inspired firms in Canada. They are trained to the highest qualifications in their field, and they strive for the absolute highest standards in everything they do.

When it comes to style, they certainly have their own vision, but they also work within a wide range to meet their clients' unique needs. They embrace change and enjoy the challenge of thinking differently, always with the intent of designing an optimal end-user experience. Every decision, process and idea work together to create incredibly tasteful, smart spaces that make life better.

Beedie Construction

An industry leader in Metro Vancouver, Beedie Construction has been building communities and commercial properties for over 65 years. From our custom homes to 'built-to-suit' industrial developments, the Beedie Construction team allows us to maintain the highest level of craftsmanship in our diverse project experiences.

Beedie Service Plus

Supported by intuitive processes and our knowledgeable and dedicated in-house Service Plus team, we provide service throughout your warranty and regular maintenance periods. More support. More convenience. More peace of mind.

Rethink Expectations

Forty-Five Storeys.
Designed With Purpose.

SlateByBeedie.com

This is not an offering for sale. Any such offering can only be made with a disclosure statement. Details within are subject to change without notice. Renderings are an artist's interpretation only. Sales and marketing by Beedie Living Realty Ltd. E. & O.E.

Sales and Marketing by

Beedie/Living