

LEVEL

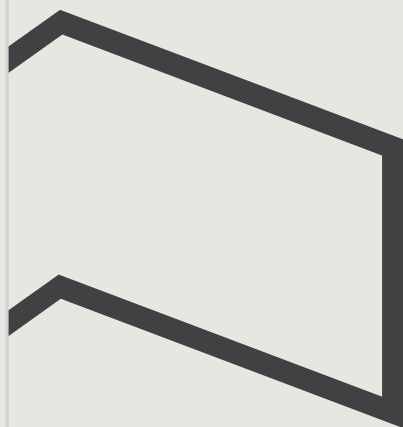
04

—32

THE URBAN COLLECTION

SLATE

By Beedie/Living



Floorplans

Plan A3
1 BED + 1 BATH + DEN
INTERIOR: 594 SQ FT
EXTERIOR: 175 SQ FT

Plan A1A
1 BED + 1 BATH
INTERIOR: 552 SQ FT
EXTERIOR: 91 SQ FT

Plan A2A
1 BED + 1 BATH
INTERIOR: 543 SQ FT
EXTERIOR: 119 - 123 SQ FT

Plan B2
2 BED + 2 BATH
INTERIOR: 765 SQ FT
EXTERIOR: 203 SQ FT

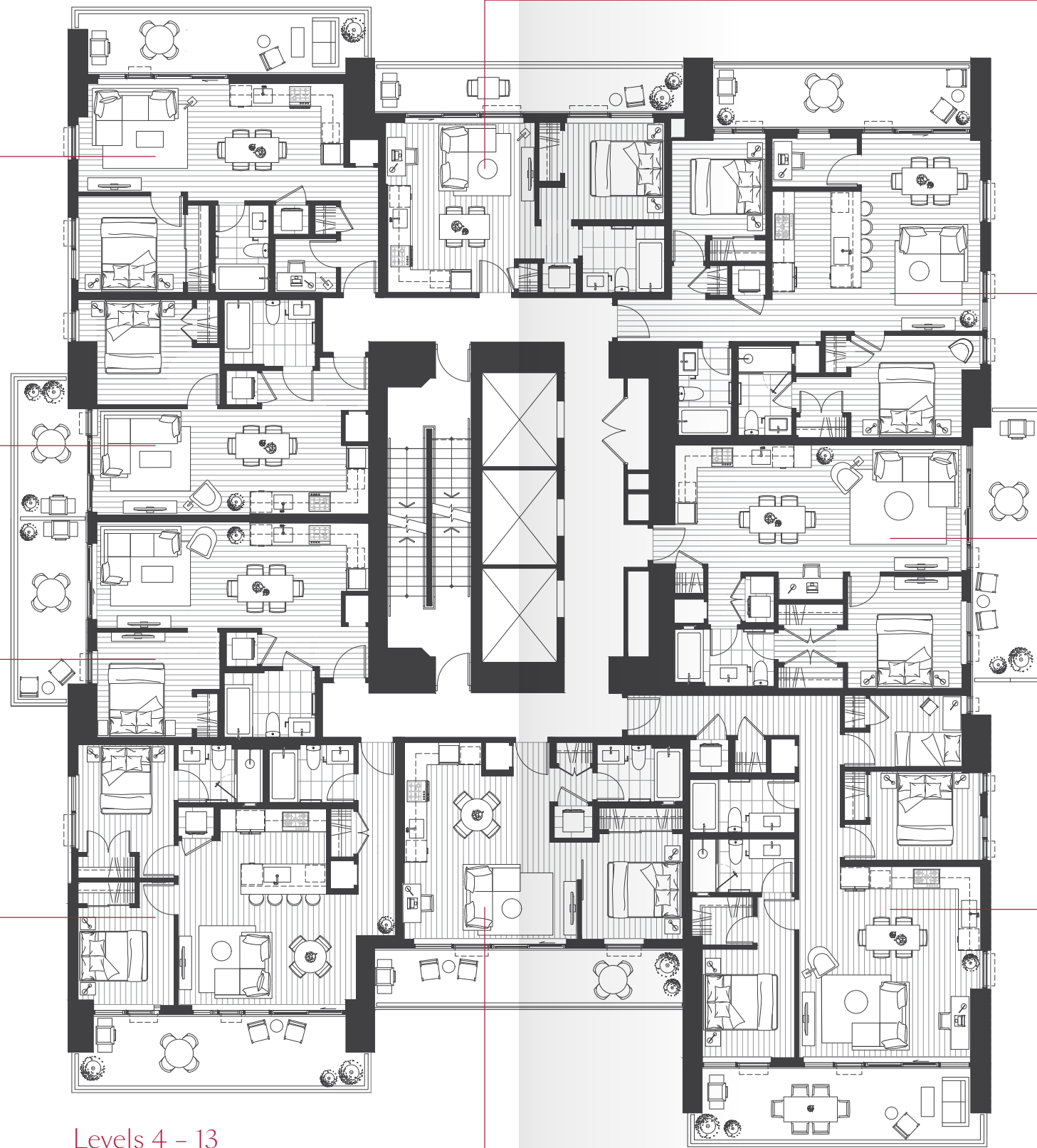
Plan A4
1 BED + 1 BATH
INTERIOR 455 SQ FT
EXTERIOR: 147 SQ FT

Plan B1
2 BED + 2 BATH + DEN
INTERIOR: 897 SQ FT
EXTERIOR: 168 SQ FT

Plan A5
1 BED + 1 BATH
INTERIOR: 672 SQ FT
EXTERIOR: 181 - 191 SQ FT

Plan C1
3 BED + 2 BATH
INTERIOR: 1,006 SQ FT
EXTERIOR: 208 SQ FT

Plan A6
1 BED + 1 BATH
INTERIOR: 524 SQ FT
EXTERIOR: 168 SQ FT



Levels 4 - 13

LEVEL

04
-13

LEVEL

17-32

Plan A3

1 BED + 1 BATH + DEN
INTERIOR: 594 SQ FT
EXTERIOR: 175 SQ FT

Plan A1A

1 BED + 1 BATH
INTERIOR: 552 SQ FT
EXTERIOR: 91 SQ FT

Plan A2A

1 BED + 1 BATH
INTERIOR: 543 SQ FT
EXTERIOR: 119 - 123 SQ FT

Plan B4

2 BED + 2 BATH
INTERIOR: 764 SQ FT
EXTERIOR: 203 SQ FT

Plan A4

1 BED + 1 BATH
INTERIOR: 455 SQ FT
EXTERIOR: 147 SQ FT

Plan B1

2 BED + 2 BATH + DEN
INTERIOR: 897 SQ FT
EXTERIOR: 168 SQ FT

Plan A5

1 BED + 1 BATH
INTERIOR: 672 SQ FT
EXTERIOR: 181 - 191 SQ FT

Plan B3

2 BED + 2 BATH
INTERIOR: 837 SQ FT
EXTERIOR: 279 SQ FT

Plan A6

1 BED + 1 BATH
INTERIOR: 524 SQ FT
EXTERIOR: 168 SQ FT



Levels 17 - 32

A1A & A2A Exist Only On Floors 17 - 27

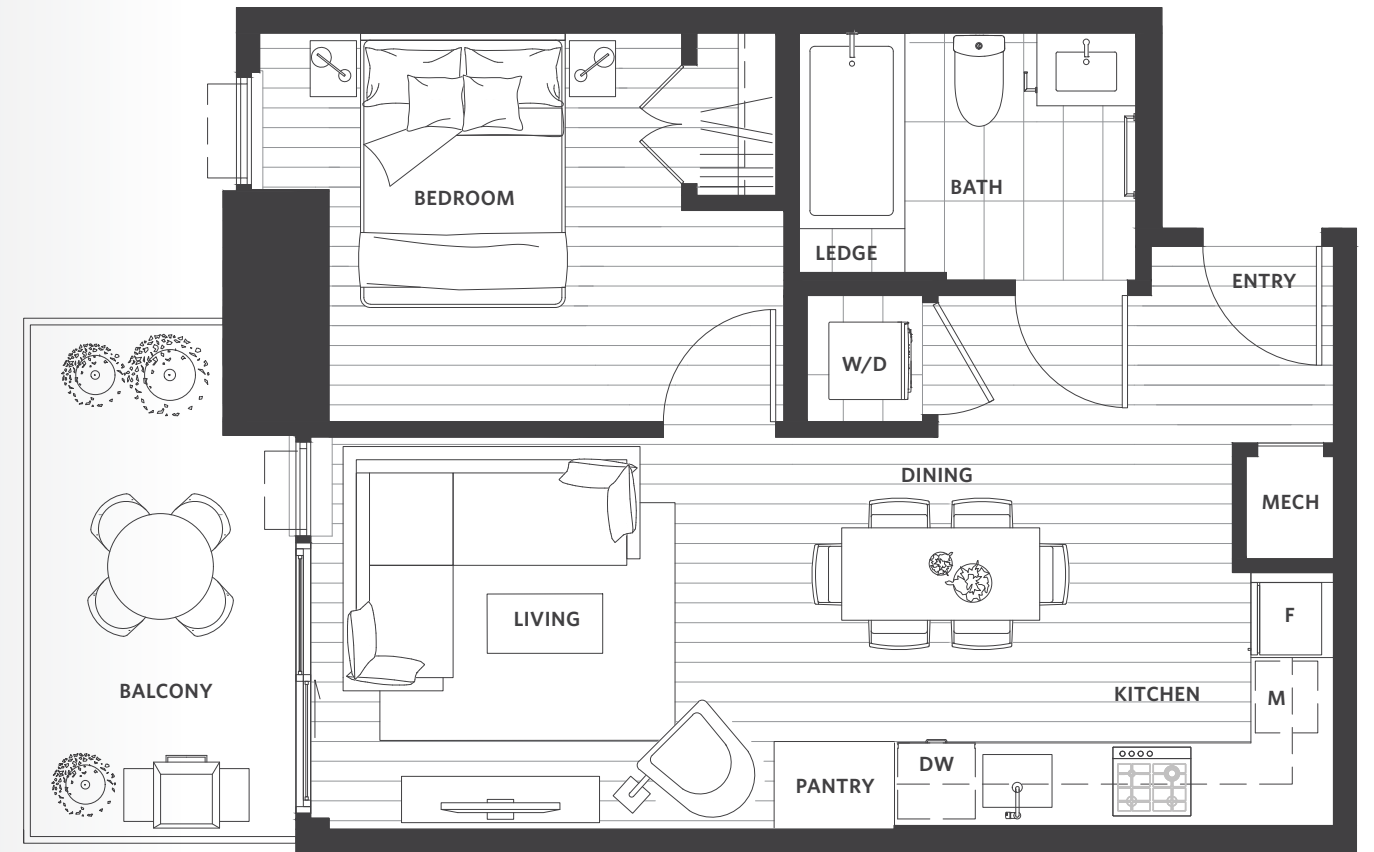


SLATE

Plan A1A

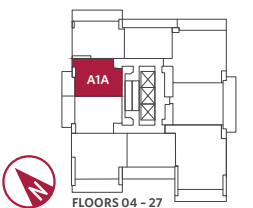
1 BED + 1 BATH

INTERIOR: 552 SQ FT
EXTERIOR: 91 SQ FT



SlateByBeedie.com

Marketing collateral such as floor plans, material specifications, and site conditions are solely for illustrative purposes only and may vary from the completed development. Dimensions, sizes, specifications, layouts and materials are approximate only and subject to change without notice. Sales and marketing by Beedie Living Realty Ltd. E. & O.E.

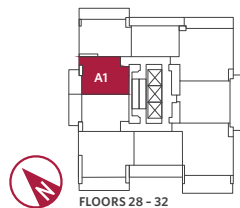


FLOORS 04 - 27

Plan A1

1 BED + 1 BATH

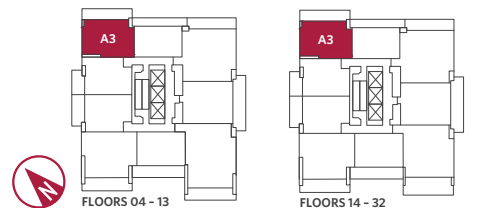
INTERIOR: 552 SQ FT
EXTERIOR: 90 SQ FT



Plan A3

1 BED + 1 BATH & DEN

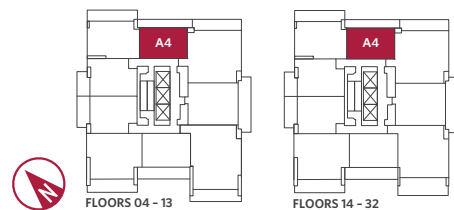
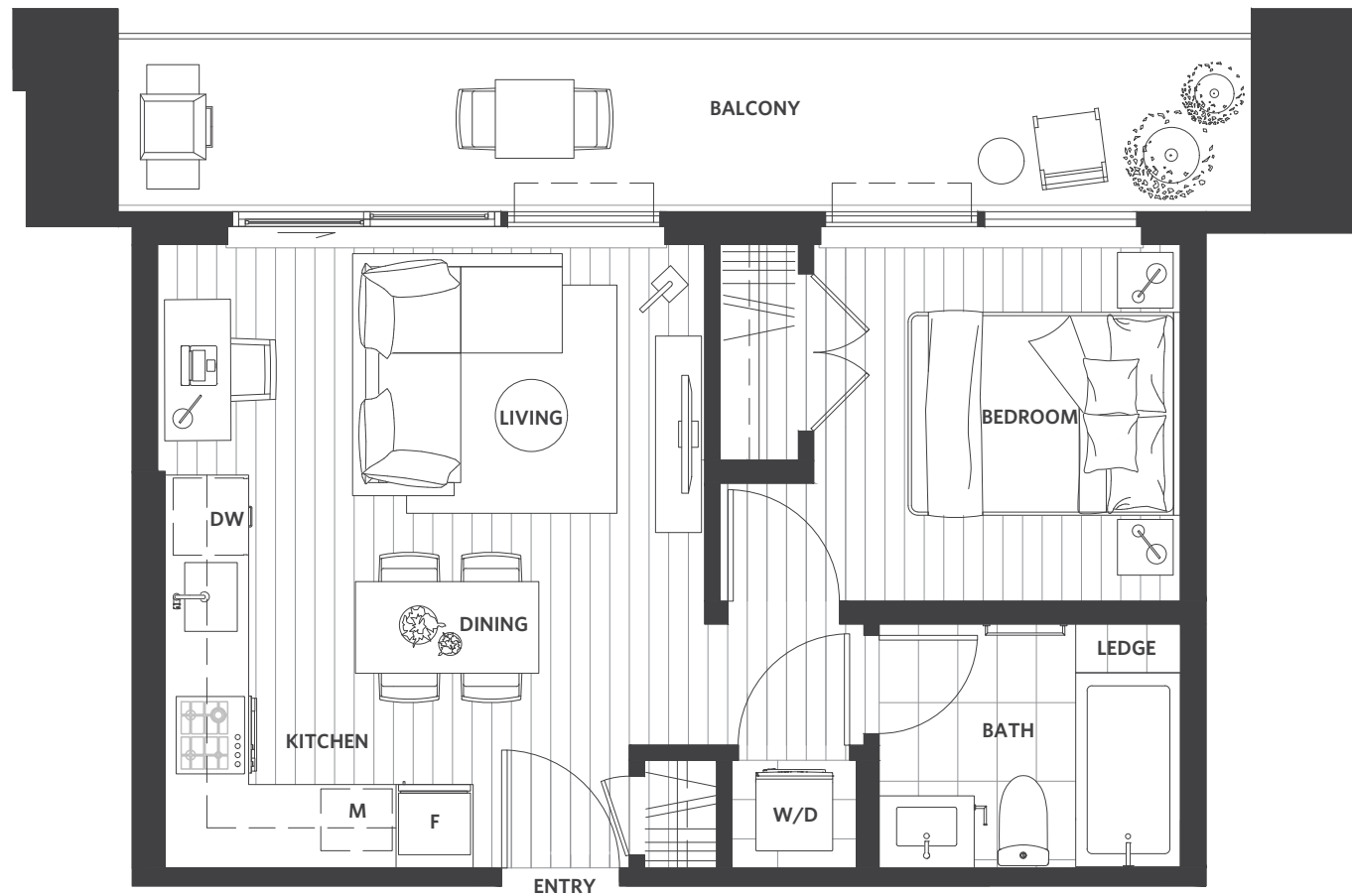
INTERIOR: 594 SQ FT
EXTERIOR: 175 SQ FT



Plan A4

1 BED + 1 BATH

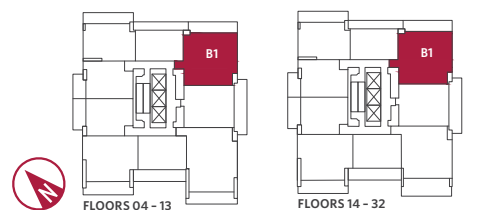
INTERIOR: 455 SQ FT
EXTERIOR: 147 SQ FT



Plan B1

2 BED + 2 BATH + DEN

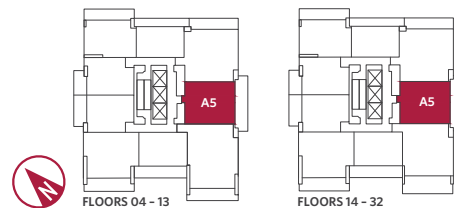
INTERIOR: 897 SQ FT
EXTERIOR: 168 SQ FT



Plan A5

1 BED + 1 BATH

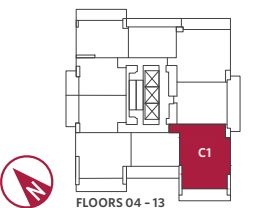
INTERIOR: 672 SQ FT
EXTERIOR: 181 - 191 SQ FT



Plan C1

3 BED + 2 BATH

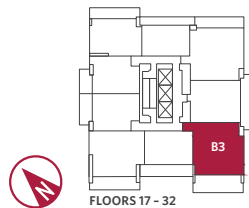
INTERIOR: 1006 SQ FT
EXTERIOR: 208 SQ FT



Plan B3

2 BED + 2 BATH

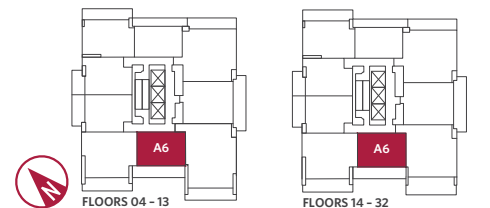
INTERIOR: 837 SQ FT
EXTERIOR: 279 SQ FT



Plan A6

1 BED + 1 BATH

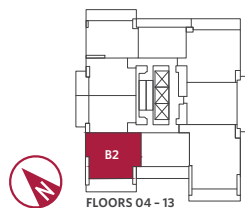
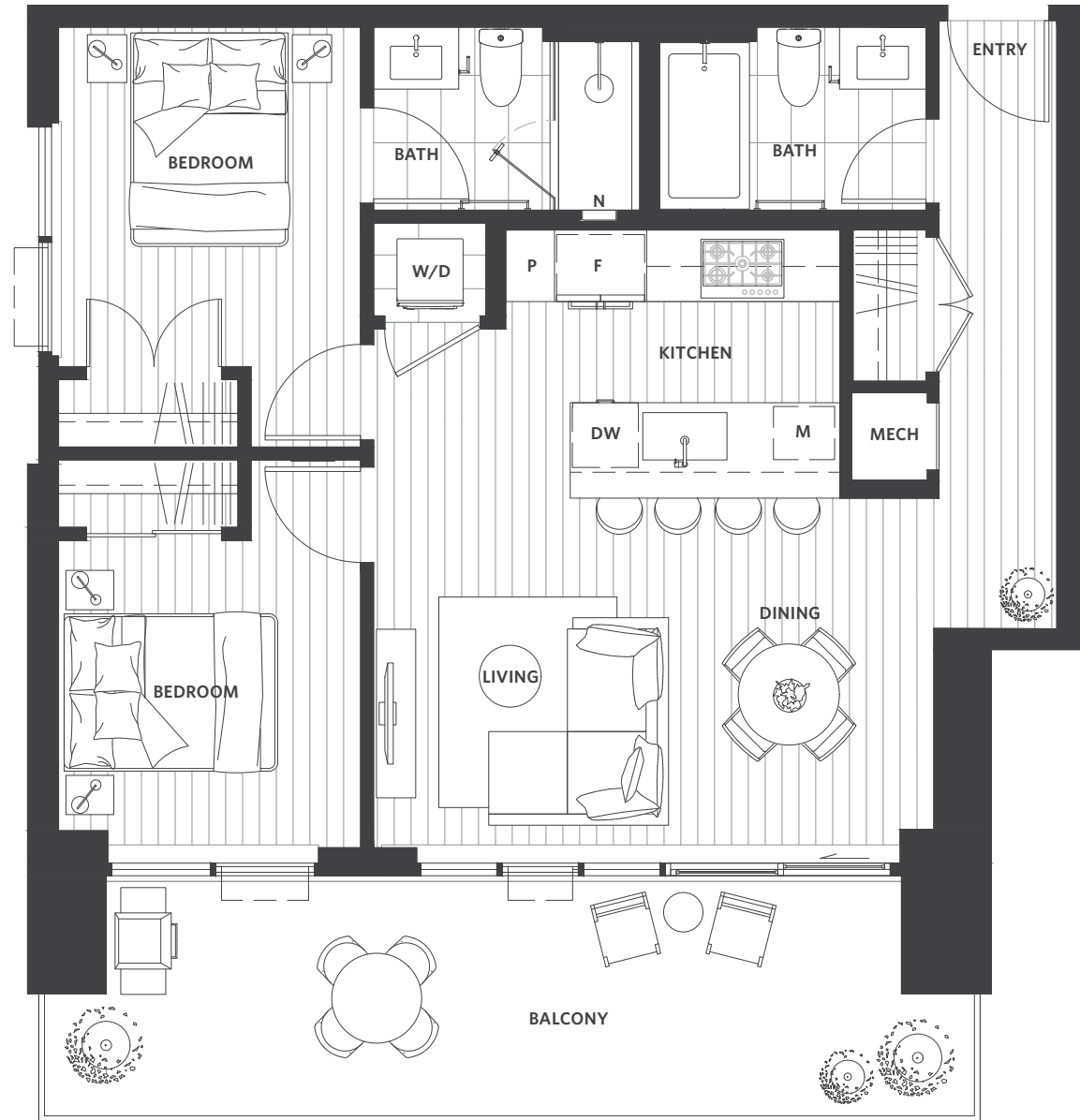
INTERIOR: 524 SQ FT
EXTERIOR: 168 SQ FT



Plan B2

2 BED + 2 BATH

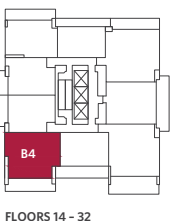
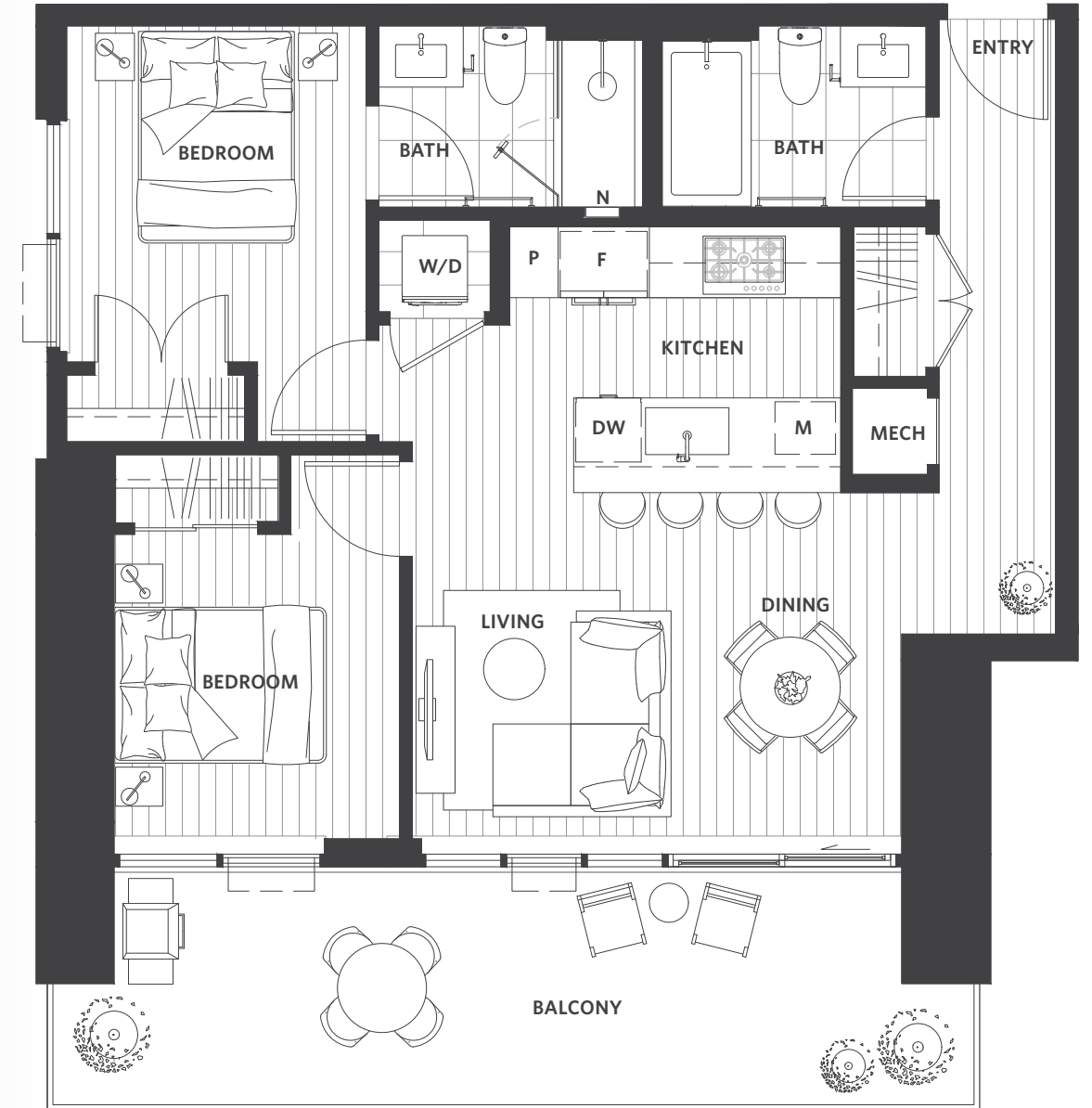
INTERIOR: 765 SQ FT
EXTERIOR: 203 SQ FT



Plan B4

2 BED + 2 BATH

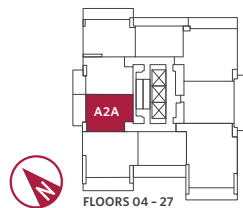
INTERIOR: 764 SQ FT
EXTERIOR: 203 SQ FT



Plan A2A

1 BED + 1 BATH

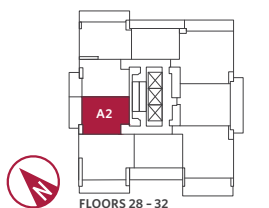
INTERIOR: 543 SQ FT
EXTERIOR: 119 - 123 SQ FT



Plan A2

1 BED + 1 BATH

INTERIOR: 543 SQ FT
EXTERIOR: 119 SQ FT



Forty-Five Storeys. Designed With Purpose.

A mastery of simplicity and intention emerge in a collection of homes by Beedie Living. Every inch is designed to be functional and to endure as you evolve, with elements throughout that make life easier. Bringing it all together is Beedie by Design — a promise to go above and beyond the ordinary to make your home truly special.

A Built-For-Good Community

- Envisioned by Beedie Living and built by Beedie Construction, an award-winning community builder with an over 65-year legacy of intelligent design and thoughtful details maintaining the highest level of craftsmanship
- A forward-thinking collection of 341 one, two and three bedroom homes, including a selection of three-level concrete townhomes
- Located in a quiet urban setting — removed from the dissonance of the town centre, yet close to the world-class amenities of Brentwood

Rethink Design

- Iconic 45-storey tower designed by DYS Architecture and Rafii Architects features a timeless façade with sleek metal panels, dramatically punctuated by two-storey white frames and culminating in a stepped summit
- Aluminum composite panelling to withstand any West Coast weather conditions
- Elegant sky gardens add greenery to the urban cityscape
- Stunning water feature is a serene greeting for guests
- Growth, a four-piece public art installation by award-winning international sculptor Kambiz Sharif, is an inspirational reminder of the presence of nature and the passing of time
- Built to LEED Silver standards to contribute to an environmentally conscious future

Rethink Vitality

- **The Health Club:**
 - Professionally designed contemporary fitness centre features a welcoming reception area, making it feel like a private club
 - Diverse range of top-of-the-line equipment so you can add variety to your workout routine
 - Individual fitness pods allow personal workouts with your favourite exercise app
 - Quiet studio space for yoga or tai chi looks onto beautiful Zen garden
 - Outdoor area for stretching and free weights to take advantage of sunny days
- **The Great Room:**
 - Sophisticated indoor-outdoor lounge with fireplace and comfortable seating to gather with friends and neighbours
 - Chef's kitchen with full-sized appliances to host private dinner functions
 - Long-table dining to host special meals together
 - Big-screen TV for sporting events
 - Pool table for friendly competition among friends
 - A movable wall can divide the space into two separate lounges
- **The Terrace:**
 - Individual lounge areas, including a sun lounge, create a sense of privacy
 - Outdoor kitchen with two BBQ and wet bar areas

- Two cozy fireside lounges sheltered by trellises
- Two harvest tables for al fresco dining
- Urban agriculture garden plots
- Large lawn for games or relaxing fronts
- The Great Room's kitchen
 - Creative children's playscape to inspire imaginations
 - Verdant landscaping throughout provides an escape from the urban setting

- **The Guest Suite:** Hotel-like guest suite with private patio and kitchenette
- **The Office:** Co-working space and business centre with outdoor patio support your career growth

Rethink Space

- Refined interiors by award-winning BYU Design
- Two beautifully curated colour palettes — light and dark
- Ceiling heights stretch up to 8'-8"
- Durable laminate flooring flows throughout living areas
- A/C for a comfortable climate year-round
- Heat recovery ventilation (HRV) replaces stale air with fresh air while minimizing energy loss
- Washable antimicrobial air filters in airstreams for clean air quality throughout your home
- An elevated sense of entry with a solid-core 7' front door and quartz stone threshold /
- Overheight 7' interior doors /

- High-performance floor-to-ceiling windows, acoustically treated for above-standard noise reduction /
- Roller shades throughout maintain privacy
- Closet organizers and lighting in the primary bedrooms /
- Wi-Fi-enabled touchscreen thermostat to program your ideal temperature
- Full-size, Wi-Fi-enabled LG front-load washer and dryer
- Sleek screwless cover plates on electrical outlets and light switches /
- Conveniently placed USB outlets in kitchen and primary bedroom
- 1-year complimentary cable and internet from TELUS (with purchase of 2-year plan)

Kitchens

- A collection of high-performance Fisher & Paykel appliances:
 - **1 bedroom homes:**
 - ~ 24" integrated refrigerator
 - ~ 24" 4-burner gas cooktop
 - ~ 24" electric wall oven
 - **2 & 3 bedroom homes:**
 - ~ 32" integrated refrigerator
 - ~ 30" 5-burner gas cooktop, including wok burner
 - ~ 30" electric wall oven
- 24" Bosch integrated dishwasher
- 24" (1 bedroom) or 30" (2 & 3 bedroom) Faber hood fan
- Panasonic microwave with trim kit
- Dramatically patterned quartz countertops flow into matching backsplash
- Waterfall edges for elegant cohesion /
- Minimalist two-tone, flat-panel, soft-close cabinetry with grey interior boxes /
- Sleek, brushed-nickel cabinet pulls for a clean look
- Magic corner cabinet storage* /
- Utensil drawer and dividers for easy organization /
- Pullout garbage and recycling system /

- Spacious pantry to efficiently store groceries and other kitchen items*
- Single-bowl, undermounted stainless steel sink, featuring a brushed faucet with pull-down sprayer
- Under-cabinet LED strip lighting for precision tasks
- Pot lighting and dining pendant lights on a dimmer switch to control your atmosphere /

Bathrooms

- Distinguished large-format porcelain tiles cover floors and walls
- Minimalist two-tone, flat-panel, soft-close cabinetry with grey interior boxes /
- Discreet chrome cabinet pulls
- Under-cabinet LED strip lighting with motion sensor is ideal for nighttime /
- Mirrored medicine cabinet to house toiletries
- Top-cabinet divider aids organization in ensuite /
- Undermount sink with single-handle stainless steel Grohe faucet
- Convenient niche in standing showers /
- Grohe chrome shower set with hand-held shower wand
- Grohe ceiling-mount rainshower head in ensuite* /
- Shower pan with zero threshold and centre drain in ensuite* /
- Soaker bathtub in secondary bathroom or ensuite
- High-efficiency toilet with soft-close seat and quiet flush
- Rough-in for bidet in primary bathroom /

Outdoors

- Spacious balconies extend living to the outdoors
- Lighting provides ambience at night /
- Overheight screens between homes maintain privacy
- Electrical outlets for additional convenience /
- Lush landscaping with wood-look soffits and flooring creates an outdoor oasis*

SLATE

Beyond Home

- Impressive triple-height lobby features a welcoming fireplace and lounge area
- Concierge service offers residents peace of mind and convenience
- Integrated parcel boxes ensure deliveries remain secure in your absence
- Three high-speed elevators for efficient comings and goings
- Wi-Fi throughout common areas
- All parking stalls are electric vehicle-ready (208 V)
- Three dedicated car-share stalls, with one allocated to Modo
- Designated car wash area to clean your vehicle after local adventures
- Bike wash, repair station and trailer storage area support a cycling lifestyle
- Resident and visitor bike racks
- Storage locker to keep extra possessions and seasonal items secure
- All access points are key fobbed
- Security cameras in high-traffic areas
- Experience peace of mind with a 2-5-10 warranty from Travelers Canada
- The Beedie Service Plus team ensures your expectations are exceeded throughout homeowner orientation, move-in and warranty periods

SlateByBeedie.com

Marketing collateral such as floor plans, material specifications, and site conditions are solely for illustrative purposes only and may vary from the completed development. Dimensions, sizes, specifications, layouts and materials are approximate only and subject to change without notice. Sales and marketing by Beedie Living Realty Ltd. E. & O.E.

/ Beedie by Design feature.

* Applicable to select homes.

Please inquire for further detail.

Sales and Marketing by

Beedie/Living



Forty-Five Storeys.
Designed With Purpose.

SlateByBeedie.com

This is not an offering for sale. Any such offering can only be made with a disclosure statement. Details within are subject to change without notice. Renderings are an artist's interpretation only. Sales and marketing by Beedie Living Realty Ltd. E. & O.E.

Sales and Marketing by

Beedie/Living